



Ananta elite

SITE ADDRESS

"Ananta Elite" Nirav Chokshi Apt. Co. Op. Hou.Soc.Ltd.
Near Amdawadi- Paldi- Metro Crossing, Ambawadi- Ahmedabad.

PROJECT DEVELOPER

Anshul corporation
Nilesh K. Patel | 9376180568
Anshul N. Patel. - B.E. (Civil) | 9408780126

ARCHITECT

Profiles
Chandrakant D. Vora

STRUCTURAL CONSULTANT

DUCON Consultants Pvt. Ltd.

TEAM ANANTA ELITE:

Shriji construction:- Hiren K. Patel
Site Supervisor:- Vishnubhai B. Gajjar
Site Manager:- Mahesh A. Patel
Site Care Taker:- Ramesh Rot

RERA Reg. No.: PR/GJ/AHMEDABAD/AHMEDABAD CITY/AUDA/RAA06980/110520 | www.gujrera.gujarat.gov.in

EXPERIENCE
A LIFE OF
UNENDING
LUXURY

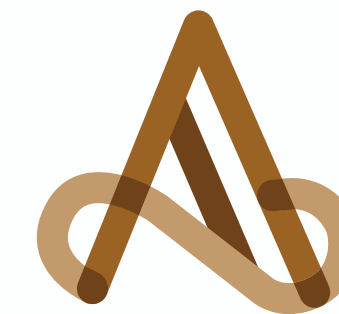


Ananta elite

*An unending abode of
luxury & spaciousness*

'Ananta Elite' is a lavishly designed residential project offering 3 BHK abodes that promise a life brimming with luxury and ultra-spaciousness. Ananta literally means unending or eternity, and every home echoes this philosophy through every facet. With best-in-class amenities and great connectivity, 'Ananta Elite' is the address you want to make your own.

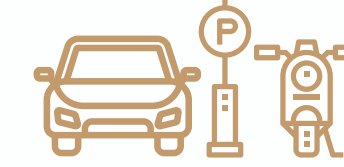
The property has something for everyone and a lot of care has been put in to offer you the best of what life has to offer. Come, enter a world where the living spaces celebrate life and its residents.



Ananta elite



Automatic lift with 10 passenger capacity of TRIO Company



Car and two wheeler parking at basement and entire ground floor area



Video door phone in each apartment



CCTV surveillance in common area



Peripheral wall mounted lights



24x7 water supply with society bore and AMC supply



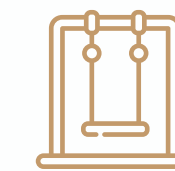
Effective anti-termite treatment



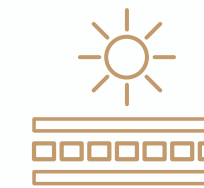
Rain water harvesting / percolation well



Well-designed Foyer



Children's play area at ground floor



Internal & external double plaster protecting from scorching city temperature

Designed for a life of comfort.

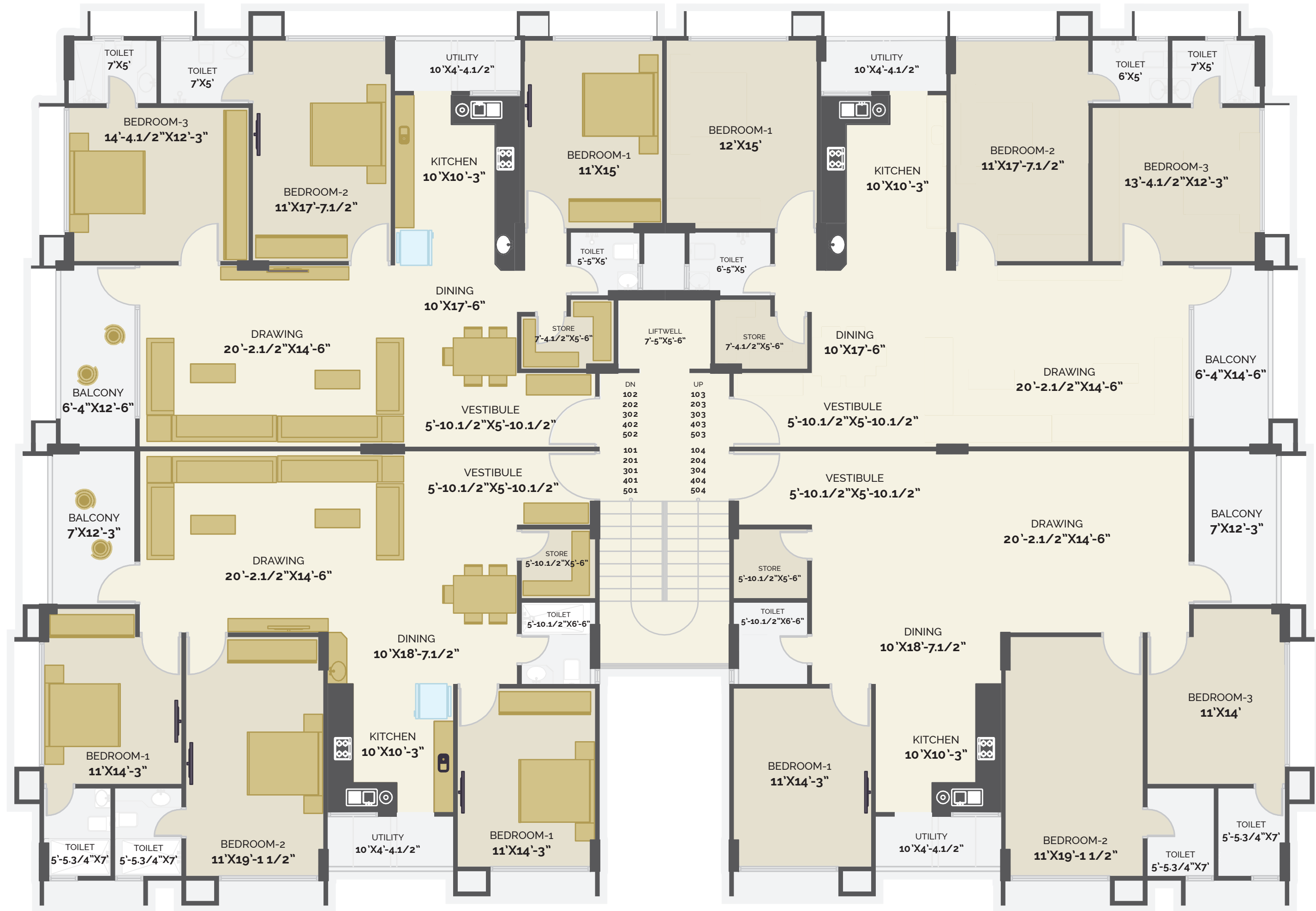


There is something for every member of the house.



Lavishly designed living room & kitchen area for maximum comfort.

30 FT T/P ROAD





*Beautifully designed spaces
for maximum sunlight and ventilation.*

Specifications

Structure	: Earthquake resistant shear wall structure
Plaster Work	: Double coat sand face plaster on external and inside walls
Flooring	: •Drawing/ Living, Dining, Kitchen, Store, Bedrooms - 600x1200 vitrified tiles •One master bedroom - Wooden look design 600x1200 vitrified tiles •Balcony - Wooden look 600x600 vitrified tiles
Wash Area	: Anti-skid full body floor tiles with Dado vitrified tile
Kitchen	: •Polished telephone black Granite platform with Carysil granite sink and wash basin and service platform •Premium quality glazed tile on platform up to slab level •Green Marble shelves in store room
Toilets	: 600x600 vitrified tiles up to top slab level
Doors	: Main Door :Decorative flush door with veneer finish and frame with lock and handle Internal Bedroom Door :Flush door with both sides premium laminate with wooden door frame S.S. matte finish handle with locks Kitchen, Store, Toilets : Flush door with both sides premium laminate S.S. mate finish handle with baby latch
Windows	: AkzoNobel PEF coated Aluminium domal section sliding toughened glass windows with Granite frame window
External & internal Wall	: External wall : Double coat sand face plaster with acrylic paint and texture Internal wall : Double coat sand face plaster with Birla putty finish
Electrification	: •Three phase concealed ISI Copper wiring of R.R. cables and branded modular switches •ELCB/ MCB distribution panel
Plumbing & Sanitary	: •Plumber, Cera or equivalent make branded sanitary ware •Astral CPVC/ UPVC pipe and fittings
Waterproofing	: •Waterproofing treatment in all toilets and wash areas by Dr. Fixit Pidifin 2k •China Mosaic or heat resistant tiles and Aquaseal concrete waterproofing treatment at terrace (certified) •Rain water harvesting system •Wall mounted lights peripheral

Terms & Conditions

- All rights are reserved to the developer for any change in the plan, specification and any other details which will be binding to all the members.
- To maintain the aesthetics of apartment elevation installation of AC outdoor units will be permitted at the designated location only and nowhere else which will be binding to all the members.
- Changes to structural elements are strictly prohibited at all the lifetime of the building. Such activity from any member at any time will be brought forth for legal action.
- All dimension are approximate and unfinished subject to change.
- This brochure is only for advertising and visual Impression only, it shall not be considered as a part of legal documents
- Furniture and fixtures shown in the brochure are for visual impression purpose only Subject to Ahmedabad jurisdiction only.

Key Plan



Stay connected to the city's important landmarks

'Ananta Elite' is located in Ambawadi and this makes it easily connected to popular landmark areas of the city. From temples to hospitals to malls to gardens, everything is nearby. Just a walk or a short drive away. As a resident, you would feel a sense of belonging to the city while living in the comfort of your dream abode. Even the Ambawadi-Paldi Metro crossing is just a walk or a short drive away.